

# ASPEN HOME

HOLIDAY 2007/08

M A G A Z I N E



## DOWNRIGHT FUN IMAGINATIVE FAMILY SPACES

### SNOWMASS REJUVENATED

WHAT'S OLD IS NEW AGAIN

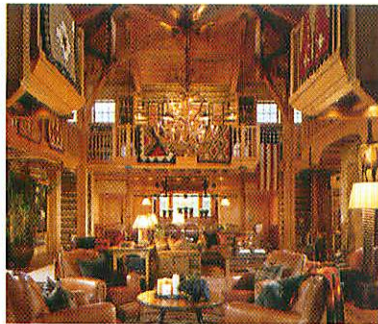
### JUST RIGHT

A PERFECT PAIRING OF HOUSE  
AND LANDSCAPE

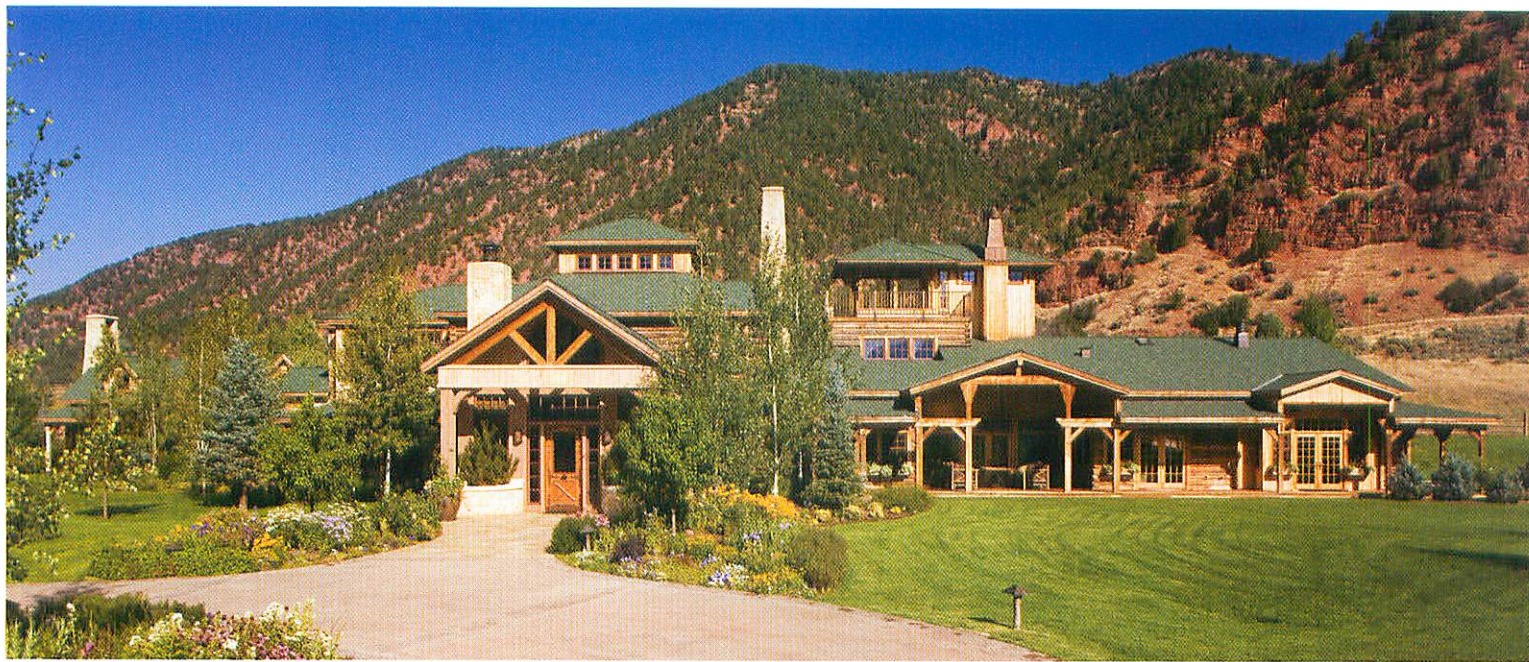
### PLUS

ROARING FORK LIVING, MOROCCAN STYLE  
ART FROM A DIFFERENT PERSPECTIVE  
TWO TOP ASPEN DESIGNERS





ASPEN'S EXCLUSIVE CHRISTIE'S AFFILIATE ■ SMALL AND PERSONAL ■ PAIRING EXQUISITE PROPERTIES WITH DISCRIMINATING BUYERS



Photos by: Steve Munding

## MEANWHILE /... RANCH

Set against the red rock spires in Snowmass Canyon, this ranch compound is a snapshot of Aspen's history with beautifully preserved residential structures combined with all the amenities of today in one of Colorado's most spectacular residences. Inspired by the National Park lodges of the 1920s, '30s and '40s, the Adirondack-style main residence has a magnificent great room featuring 35-foot ceilings, a wraparound second-floor library, a dramatic stone fireplace and spectacular views reaching all the way to Independence Pass. The commercial grade kitchen includes two butler pantries, side-by-side refrigerators and pendant fixtures created from antique San Francisco streetlamps. Belly up to the wonderful old-time bar or play in the entertainment suite, complete with a theater, game room and kitchen.

For more information, please contact **GARY FELDMAN / 970.948.3737 / gmf@rof.net**

### AMENITIES:

- 1911 GUEST HOUSE
- 2 CARETAKER'S APARTMENTS
- 1886 SETTLERS' CABIN
- 10,000 SF INDOOR ARENA
- 3-STALL BARN WITH TACK ROOM
- AUTO SHOWROOM/WOODSHOP
- RIDING ARENA
- HAY BARN
- SENIOR WATER RIGHTS

### MAIN HOUSE:

BEDROOMS	4
BATHROOMS	6
SQUARE FEET	12,000 +/-
PROPERTY SIZE	58 acres
PRICE	\$27,500,000

# JOSHUA & CO.

REAL ESTATE ■ MANAGEMENT SERVICES ■ LUXURY RENTALS

ASPEN OFFICE 516 East Hyman Avenue, Aspen, CO 81611 / 970.925.8810 / www.joshuaco.com

Exclusive Affiliate of  
**CHRISTIE'S**  
GREAT ESTATES